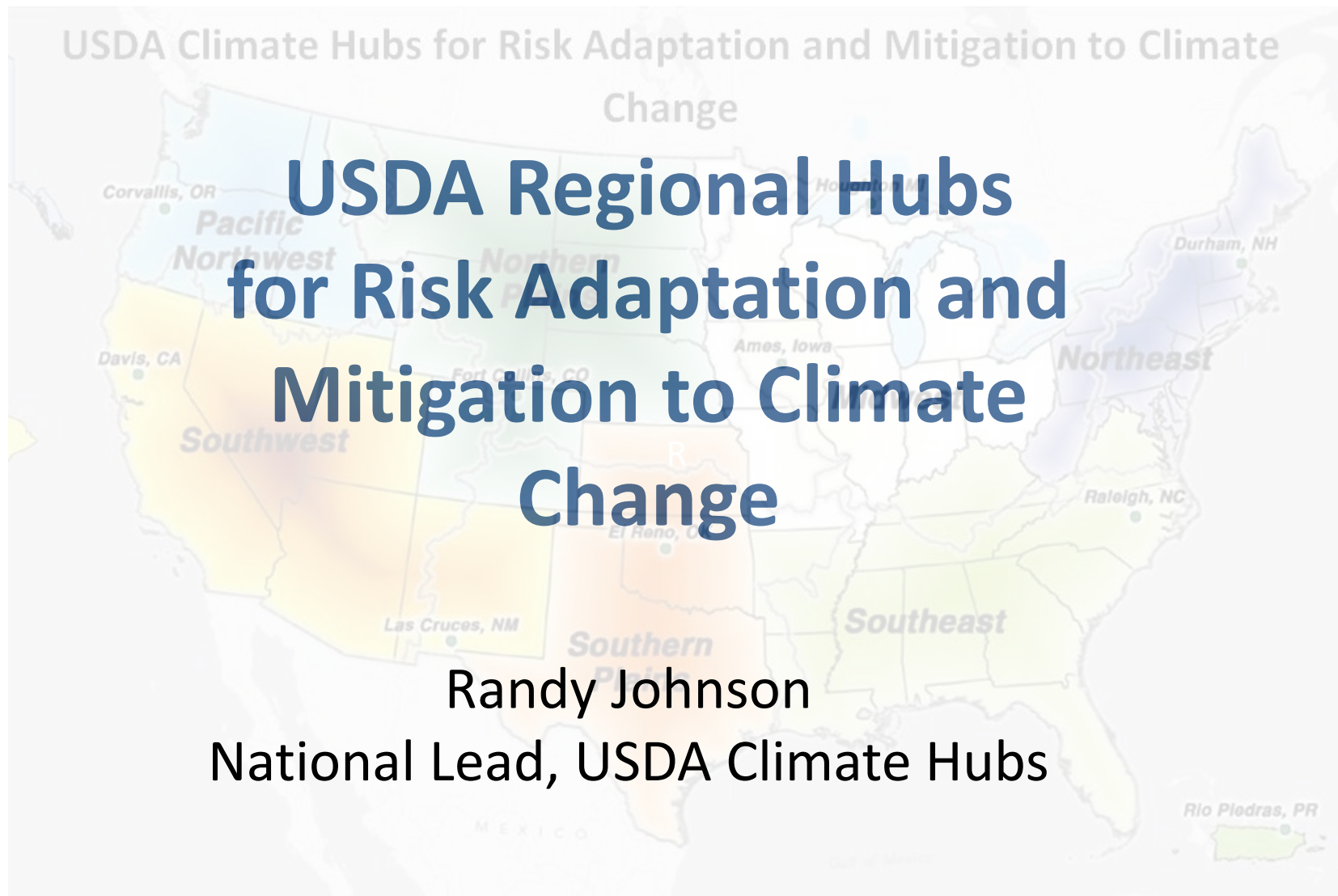




USDA Climate Hubs for Risk Adaptation and Mitigation to Climate Change

USDA Regional Hubs for Risk Adaptation and Mitigation to Climate Change

Randy Johnson
National Lead, USDA Climate Hubs





Today's Topics:

Climate Hub overview

Climate Hub regions & locations

Inter- and intra-agency
cooperation

What's next



What are the Climate Hubs?



Vision: Agricultural production and natural resources maintained and strengthened under increasing climate variability and environmental change

Mission: To develop and deliver science-based, region-specific information and technologies to agricultural and natural resource managers that enable climate-smart decision-making and provide assistance to enable land managers to implement those decisions.



USDA Regional Climate Hubs will provide:

- **Technical & Program Support**
- **Assessments and Forecasts**
- **Outreach and Education**

Conceptual Framework for a USDA Regional Hub

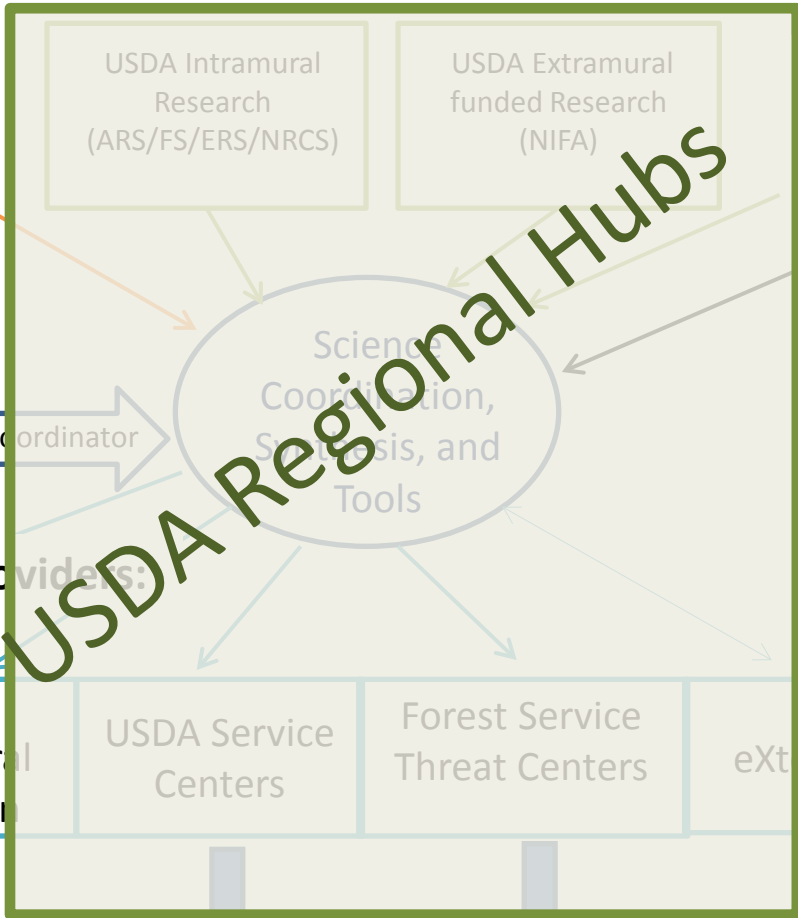
Science and Technology providers:

Federal Partners

NOAA RISA
USGS CSC
DOE
NASA
etc

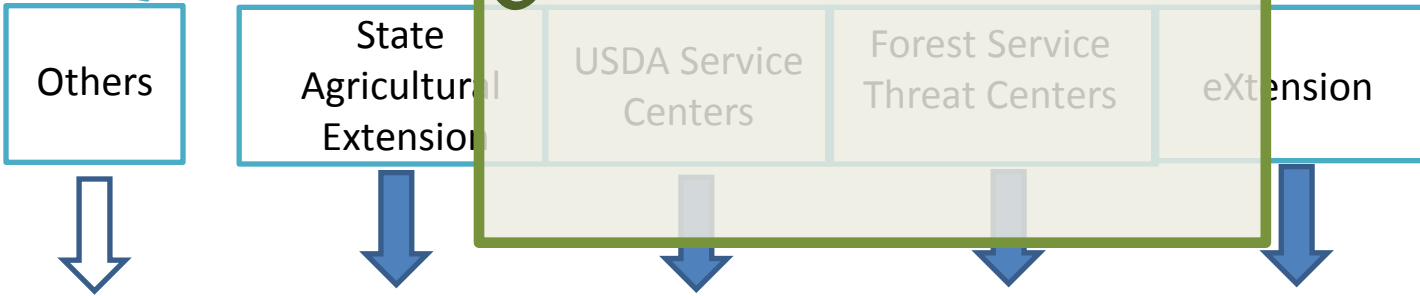
Non-Federal Partners

Agricultural
Experiment
Stations
Many others



Links with other Hubs & National Coordinator

Technology Transfer providers:

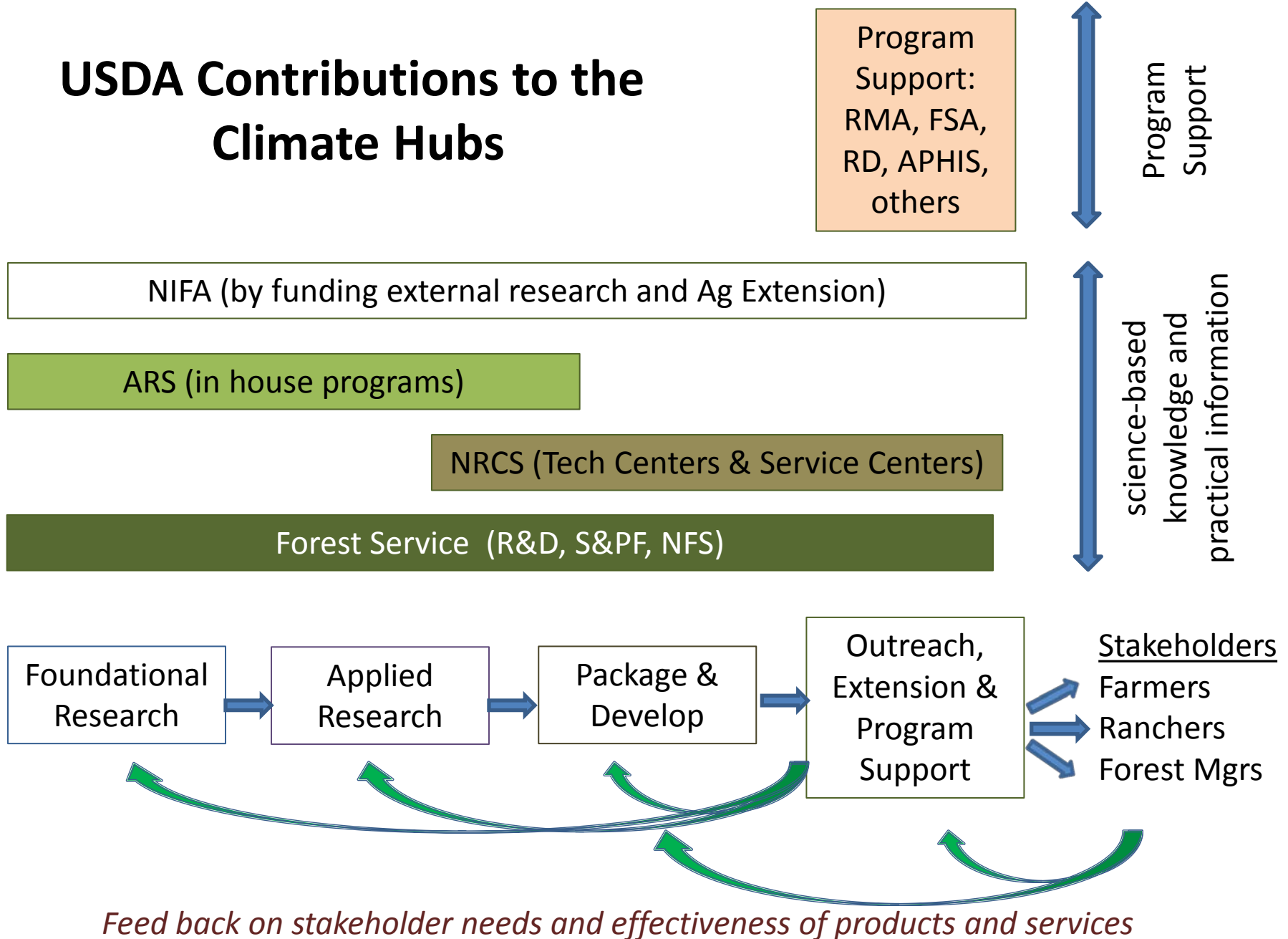


Information and tools

Questions and feedback

Stakeholders and Stakeholder group: Farmers / Ranchers / Forest Managers / Tribes / States / Feds / LCCs / Others

USDA Contributions to the Climate Hubs





Where are the Climate Hubs?

USDA Climate Hubs for Risk Adaptation and Mitigation to Climate Change

Forest Service Lead

Corvallis, OR

Pacific Northwest

Davis, CA

Southwest

Northern Plains
ARS Lead

Fort Collins, CO

ARS Lead

El Reno, OK

ARS Lead

Las Cruces, NM

Southern Plains

Houghton MI

ARS Lead

Ames, Iowa

Midwest

Forest Service Lead

Durham, NH

Northeast

Forest Service Lead

Raleigh, NC

Southeast

Rio Piedras, PR

Regional Climate Hub Locations

MEXICO

Gulf of Mexico

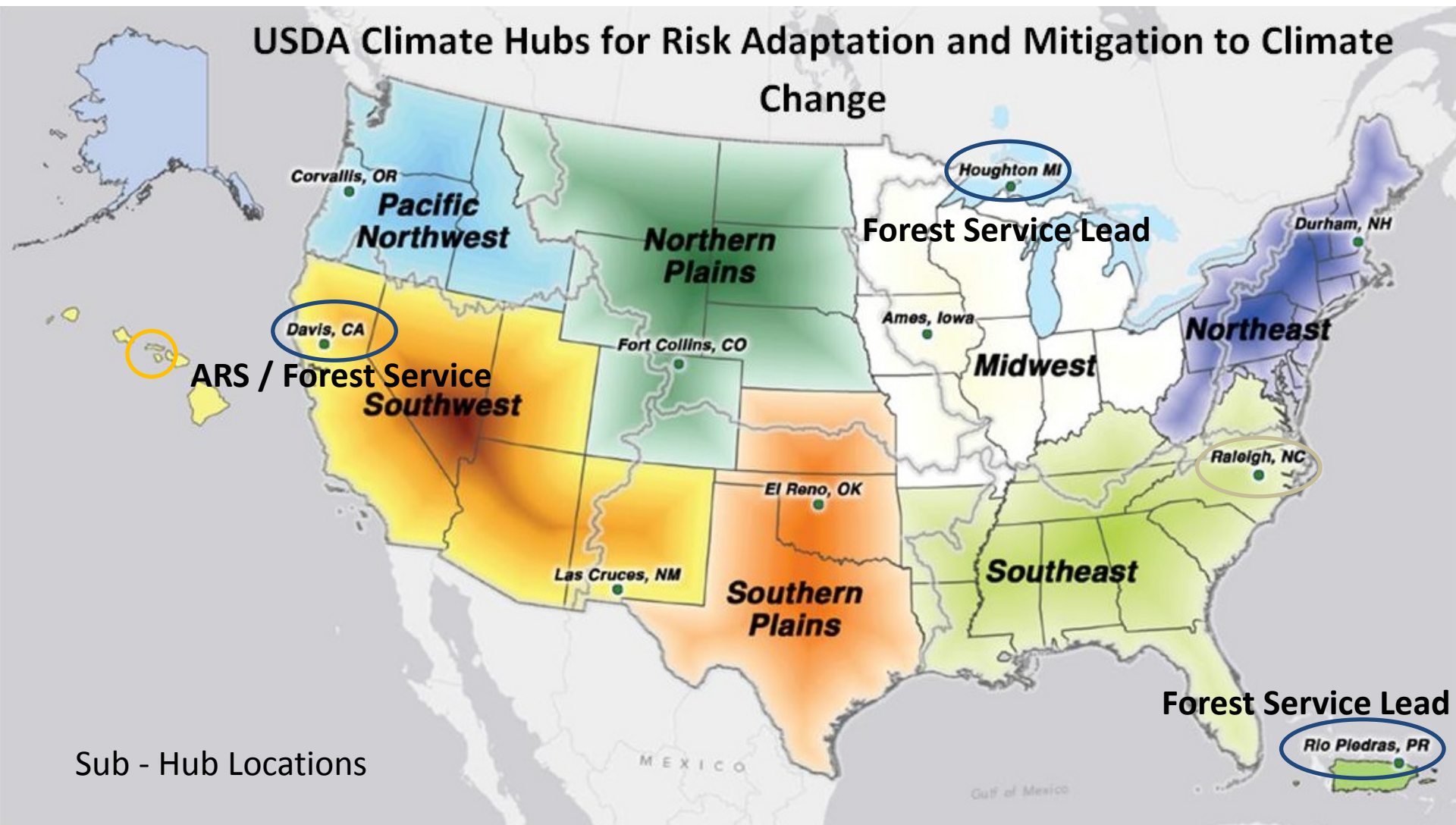




Revised USDA Climate Hub Regions



USDA Climate Hubs for Risk Adaptation and Mitigation to Climate Change

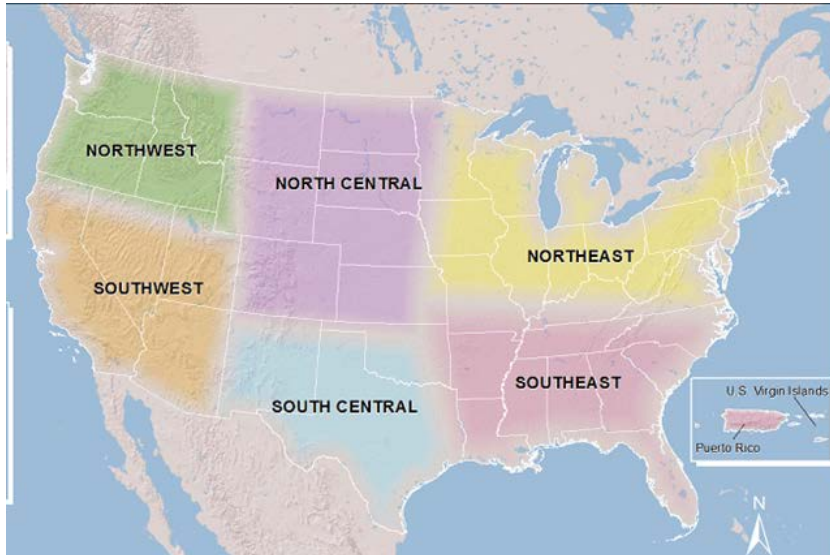


Sub - Hub Locations



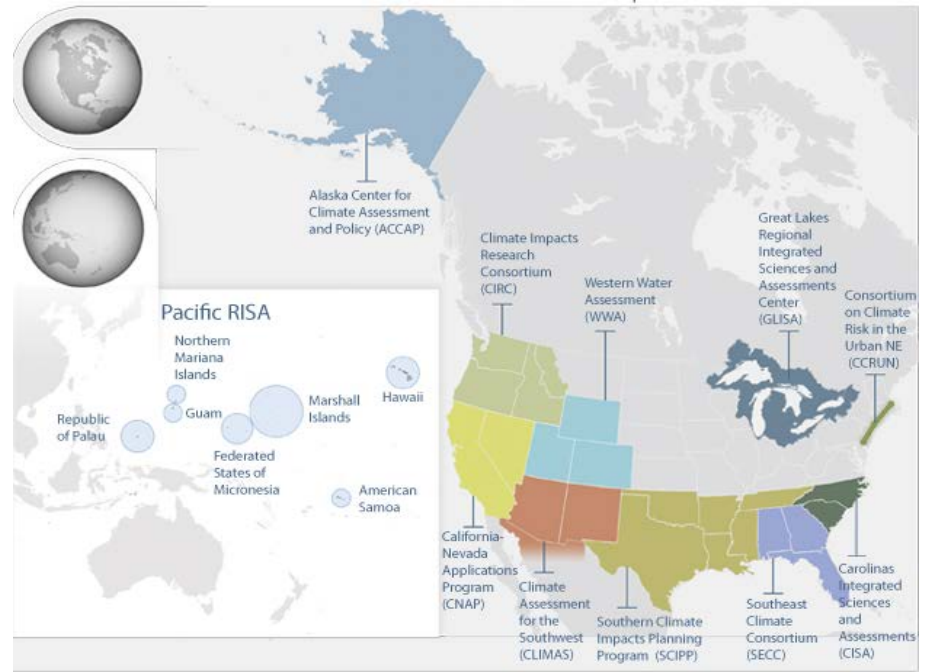
**Coordination with other federal
regional climate efforts**

USGS Climate Science Centers

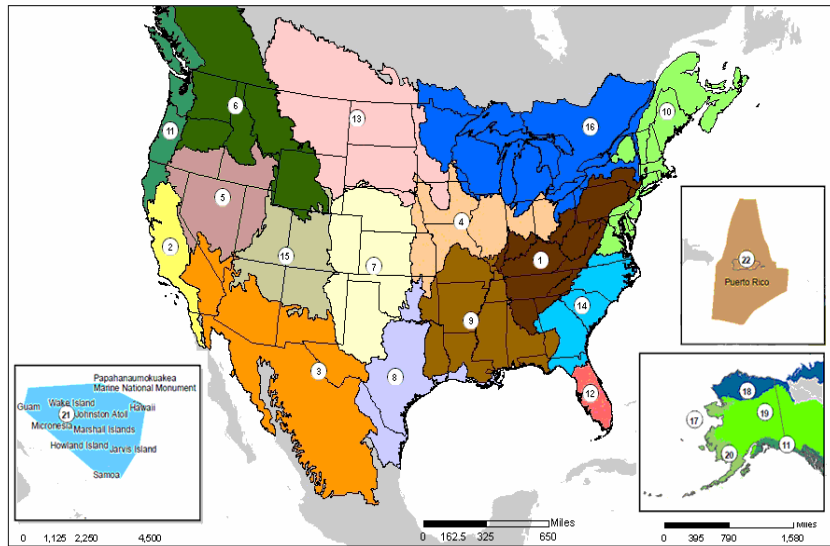


Other federal regional efforts associated with climate change

NOAA Regional Integrated Science and Assessments

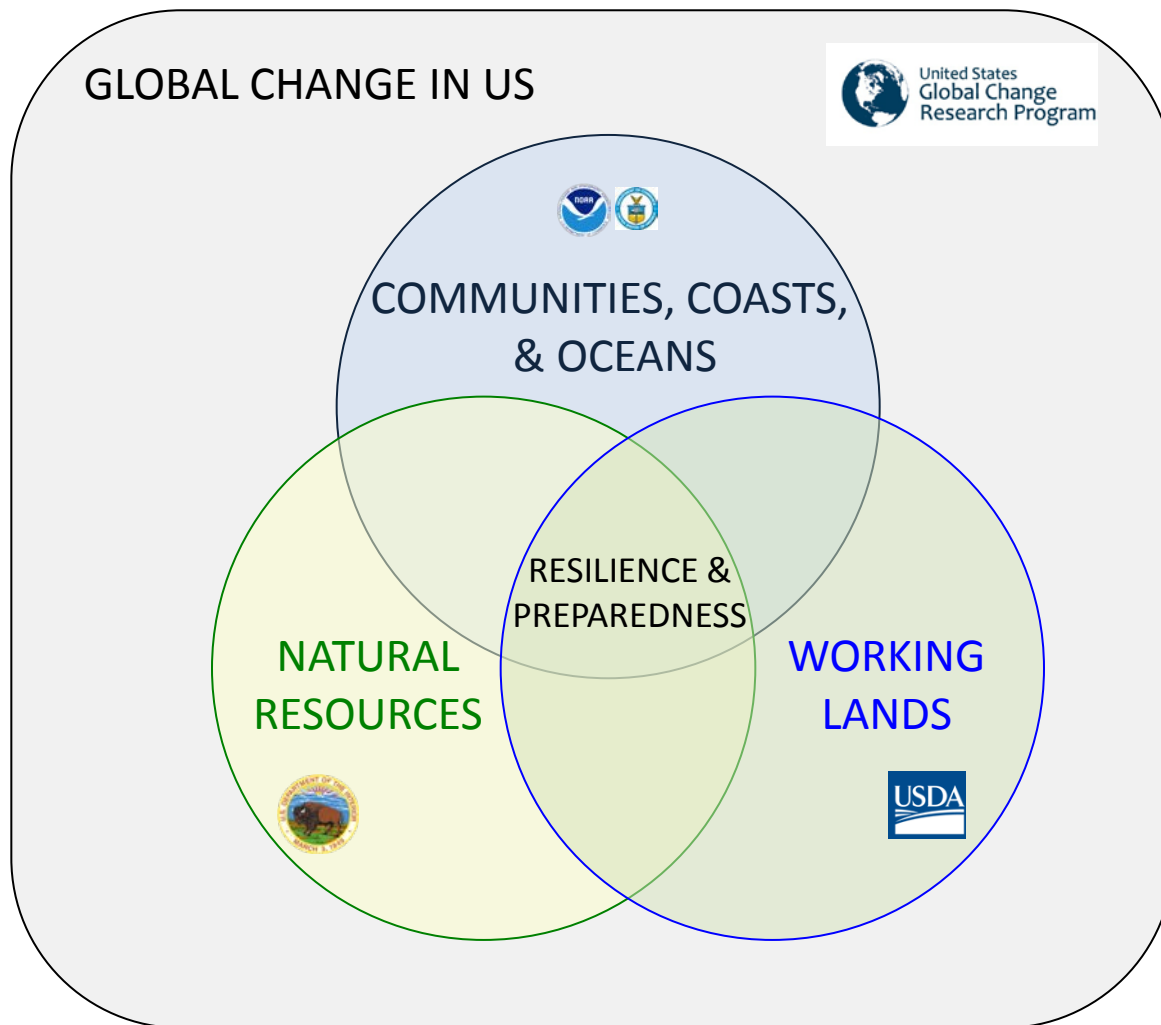


FWS Landscape Conservation Cooperatives

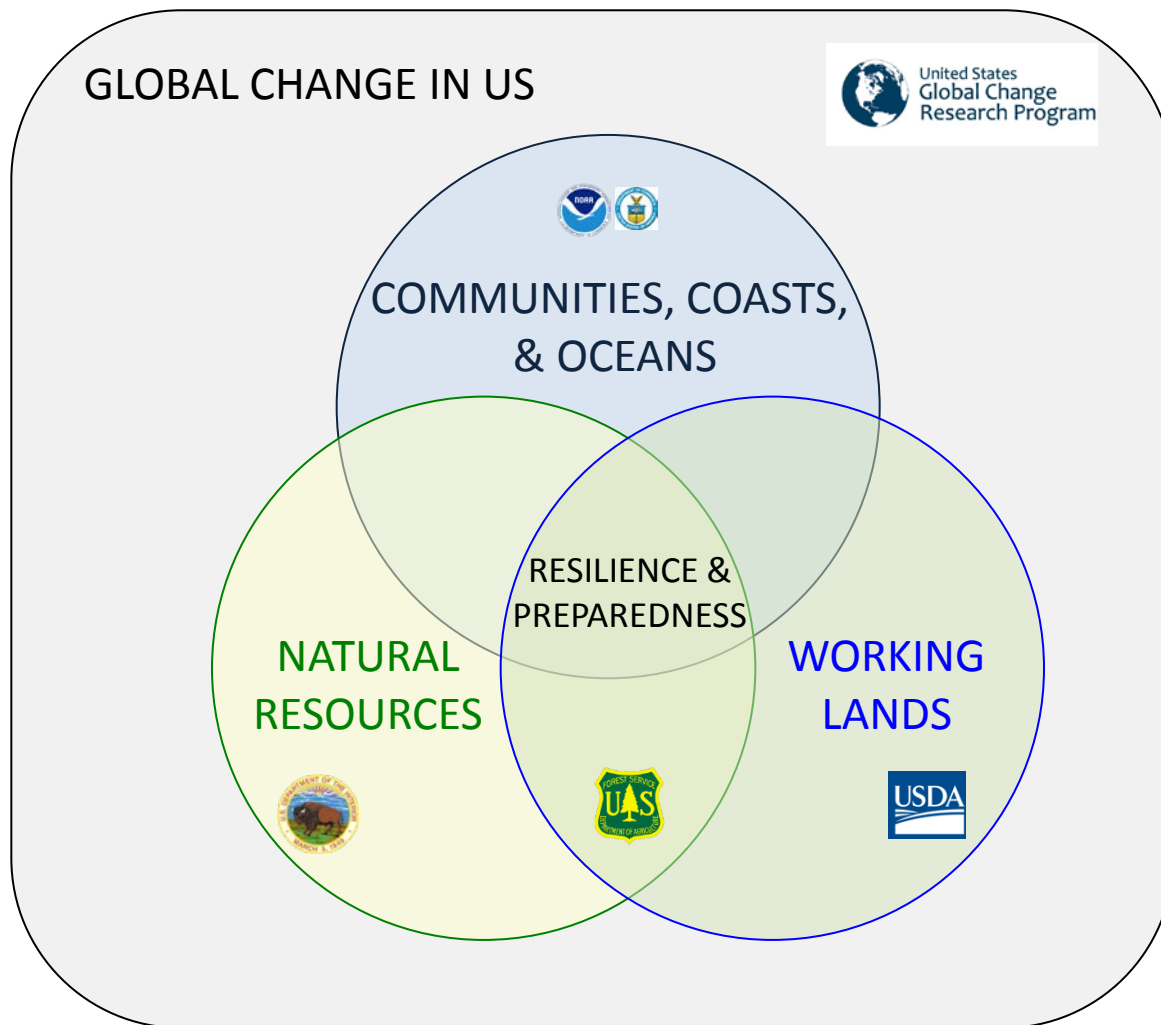


- | | | | |
|---|-----------------------------------|-------------------------------------|----------------------|
| 1. Appalachian | 7. Great Plains | 13. Plains and Prairie Potholes | 19. Northwest Boreal |
| 2. California | 8. Gulf Coast Prairie | 14. South Atlantic | 20. Western Alaska |
| 3. Desert | 9. Gulf Coastal Plains and Ozarks | 15. Southern Rockies | 21. Pacific Islands |
| 4. Eastern Tallgrass Prairie and Big Rivers | 10. North Atlantic | 16. Upper Midwest and Great Lakes | 22. Caribbean |
| 5. Great Basin | 11. North Pacific | 17. Aleutian and Bering Sea Islands | Unclassified |
| 6. Great Northern | 12. Peninsular Florida | 18. Arctic | |
- Albers Equal Area Conic NAD83
Produced by FWS, IRFM, Denver, CO
Map Date: 12/4/2011

We can't respond to global change in isolation



We can't respond to global change in isolation





What's next for the Hubs?



February-December 2014

- Assess regional vulnerabilities to ID most pressing issues
- Establish work plans
- Work with partners and stakeholders to access needs and capabilities
- Establish web presence



- Assess regional vulnerabilities to ID most pressing issues

- What resources are currently most vulnerable to direct and indirect impacts of climate change
- What may be vulnerable in the near future
- What should be the first priority areas for a Climate Hub to address

- Establish work plans

Partners

Program Support:
RMA, FSA,
RD, APHIS,
others

Program Support

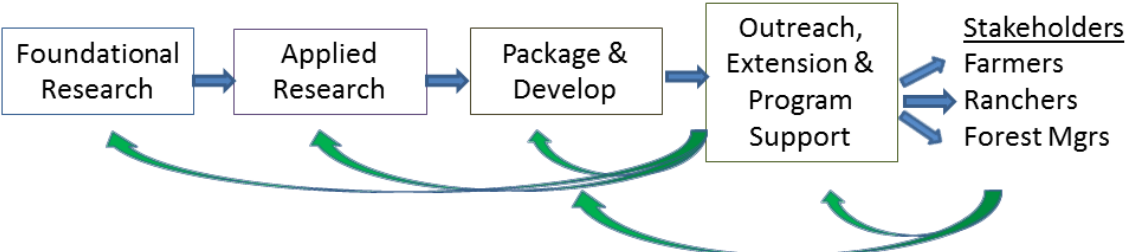
NIFA (by funding external research and Ag Extension)

ARS (in house programs)

NRCS (Tech Centers & Service Centers)

Forest Service (R&D, S&PF)

science-based knowledge and practical information



Feed back on stakeholder needs and effectiveness of products and services



- Work with **partners** and stakeholders to access needs and capabilities

- State Agricultural Experiment Stations
- State Cooperative Extension Programs
- Department of Interior USGS Climate Science Centers
- DoI FWS Landscape Conservation Cooperatives
- NOAA Regional Integrated Sciences and Assessments Program (RISAs)
- Cooperative Ecosystem Studies Units (CESU) Network



- Work with partners and **stakeholders** to access needs and capabilities

Natural Resources

- collaborate with CSCs, LCCs and other regional groups

Agriculture

- Underrepresented in current regional climate change efforts

- Establish web presence

USDA OFFICE OF THE CHIEF ECONOMIST
 United States Department of Agriculture

OCE Home | Topics | Newsroom | Reports | Blog

You are here: [OCE Home](#) / [Climate Change](#) / [USDA Regional Climate Hubs](#)

About OCE | Contact OCE

USDA Regional Climate Hubs

USDA Climate Hubs for Risk Adaptation and Mitigation to Climate Change

Click on a region to learn more about the USDA Climate Hub in your area.

What are USDA's Regional Climate Hubs?

USDA's regional hubs will deliver information to farmers, ranchers and forest landowners to help them adapt to climate change and weather variability. The Hubs will build capacity within USDA to provide information and guidance on technologies and risk management practices at regional and local scales. To learn about how climate change and weather variability are affecting agriculture in your area, click on a region of the map above. For more information on the Climate Hubs, check out the following resources:

- [USDA Regional Hubs for Risk Adaptation and Mitigation to Climate Change Factsheet](#)
- [Climate Hubs Charter](#)
- To learn more about USDA's approaches to climate challenges, visit the [USDA Climate Solutions page](#).

Climate Hubs in the News

- [Press Release: Secretary Vilsack Announces Climate Hubs Locations \(February 5, 2014\)](#)
- [Press Release: Secretary Vilsack Outlines Vision for Agricultural Solutions to Environmental Challenges \(June 5, 2013\)](#)
- [Remarks as Prepared: Agriculture Secretary Outlines Vision for Agricultural Solutions to Environmental Challenges in Speech to the National Press Club \(June 5, 2013\)](#)

Related Topics

- > Effects
- > Mitigation
- > Adaptation
- > Estimation Tools
- > Greenhouse Gas Inventory
- > Climate Change Science Plan
- > Climate Change Across USDA
- > USDA Regional Climate Hubs

- Some level of consistency over 7 Regional Climate Hubs
- Coordination with other government web sites
- “One stop shopping”
- Legacy web sites



Questions?