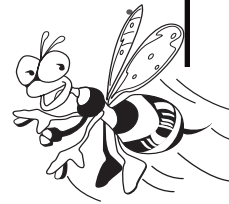


# "BEE" Informed!



Fill in the correct word in each sentence.

1. Bees are important pollinators. A \_\_\_\_\_ helps to transfer \_\_\_\_\_, a part of plant reproduction.
2. Bees have a complex \_\_\_\_\_, called a proboscis, which they use to gather \_\_\_\_\_ from flowers.
3. Honey bees flap their wings \_\_\_\_\_ times per second.
4. Some bee species live in \_\_\_\_\_; some bee species live by themselves.
5. Many bees do not \_\_\_\_\_, and stinging bees will sting only when threatened.
6. \_\_\_\_\_ bees of all species are stingless.
7. You can create a bee-friendly \_\_\_\_\_ by planting a variety of native \_\_\_\_\_.
8. Bees also gather \_\_\_\_\_ to feed to their young called \_\_\_\_\_.
9. There are an estimated 20,000 pollinating bee species \_\_\_\_\_.
10. Many bees nest in the \_\_\_\_\_, others nest in holes in trees.



## Word Bank

ground      larvae      pollinator      tongue      230      sting  
worldwide      wildflowers      pollen      nectar      communities      Male  
garden

[www.scienceinvestigator.org](http://www.scienceinvestigator.org)

[www.naturalinquirer.org](http://www.naturalinquirer.org)



Southern Research Station,  
in partnership with

