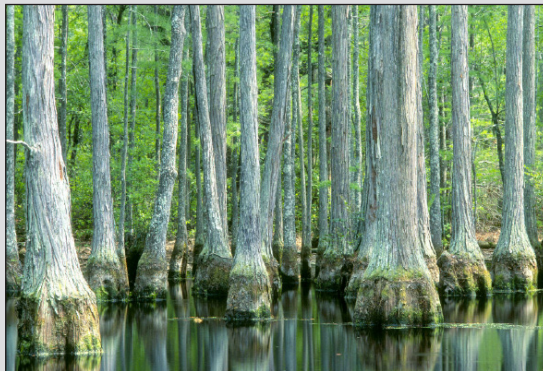


The Eastern Forest Environmental Threat Assessment Center

The USDA Forest Service **Eastern Forest Environmental Threat Assessment Center** provides the latest research and expertise concerning threats to healthy forests – such as insects and disease, wildland loss, invasive species, wildland fire, and climate change – to assist forest landowners, managers, and scientists throughout the eastern United States.

Who we are

Established in 2005, the Eastern Threat Center is a joint effort of the Forest Service Research and Development, National Forest System, and State and Private Forestry programs. Headquartered with the Southern Research Station in Asheville, NC, the Center also has offices in Raleigh and Research Triangle Park.



What we do

The Eastern Threat Center generates knowledge and tools needed to anticipate, evaluate, and respond to environmental threats, which often involve complex factors interacting at multiple scales. Center scientists represent a variety of research interests, which are combined to address these complex issues.

Center researchers work with other scientists nationally and internationally as well as with Federal, State, and local government agencies, universities, and non-governmental partners. These partnerships enable the Center to use expertise and resources efficiently and deliver products to diverse audiences in a timely, useful, and user-friendly manner. Key projects include—

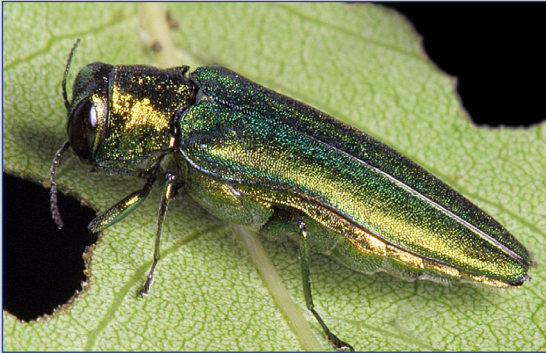


Tools and science delivery

- Collaborating to develop **ForWarn**, a satellite-based monitoring and assessment tool that recognizes and tracks potential forest disturbances across the lower 48 United States.
- Working with university partners to provide high speed access to models and databases that support development of web-based threat assessment tools.
- Hosting the USDA Southeast Regional Climate Hub, which provides science-based support to farmers, ranchers, and forest land managers.
- Contributing to annual Forest Health Monitoring National Reports summarizing forest health conditions and management priorities.

Invasive species

- Compiling a database of key life history and genetic traits for all currently known introduced plant species to allow for analyses of species invasiveness and distribution in the United States.
- Examining human-assisted spread of forest pests to anticipate where and how often invasive alien forest insects are likely to be established in the United States.



Climate change

- Collaborating to develop the Template for Assessing Climate Change Impacts and Management Options (TACCIMO), a tool for integrating climate change science into land planning and management.
- Predicting the location and quality of habitat and susceptibility to extinction for forest tree species under different climate change scenarios.
- Developing the Water Supply Stress Index (WaSSI) model to estimate ecosystem carbon and water balances and tradeoffs in the face of climatic, land cover, and human population changes.

Loss of open space

- Assessing fragmentation of forest, grass, and shrub lands to monitor land cover trends and support resource planning in the United States.

- Creating maps that reveal patterns of land use, land cover, and changing conditions in the continental United States.



Wildland fire

- Providing scientific support for development of a National Cohesive Wildland Fire Management Strategy to guide future management and wildland fire investments.
- Examining historical wildland fire data and the importance of fire in the eastern United States in order to effectively restore fire-dependent ecosystems and address future risks.



For additional information

Please visit www.forestthreats.org to learn more about the Eastern Threat Center. For additional information concerning Center programs and partnerships, please contact Perdita Spriggs, communications director, at (828) 230-3292 or by email at pspriggs@fs.fed.us.

Contact Us:

USDA Forest Service Eastern Forest Environmental Threat Assessment Center

Danny C. Lee, PhD
Director

Asheville, NC

Southern Research Station
200 W.T. Weaver Boulevard
Asheville, NC 28804
(828) 257-4298

Research Triangle Park, NC

Forestry Sciences Laboratory
3041 E. Cornwallis Road
Research Triangle Park, NC 27709
(919) 549-4000

Raleigh, NC

North Carolina State University
Centennial Campus
920 Main Campus Drive
Venture Center II, Suite 300
Raleigh, NC 27606
(919) 515-9489

Website:

www.forestthreats.org

Photo credits:

Masthead photo by Chris Evans, River to River, CWMA, www.bugwood.org.

Emerald ash borer photo by David Cappaert, Michigan State University, www.bugwood.org.

All other photos by USDA Forest Service.



Scan to learn more about the
Eastern Threat Center.

USDA is an equal opportunity
provider and employer.

