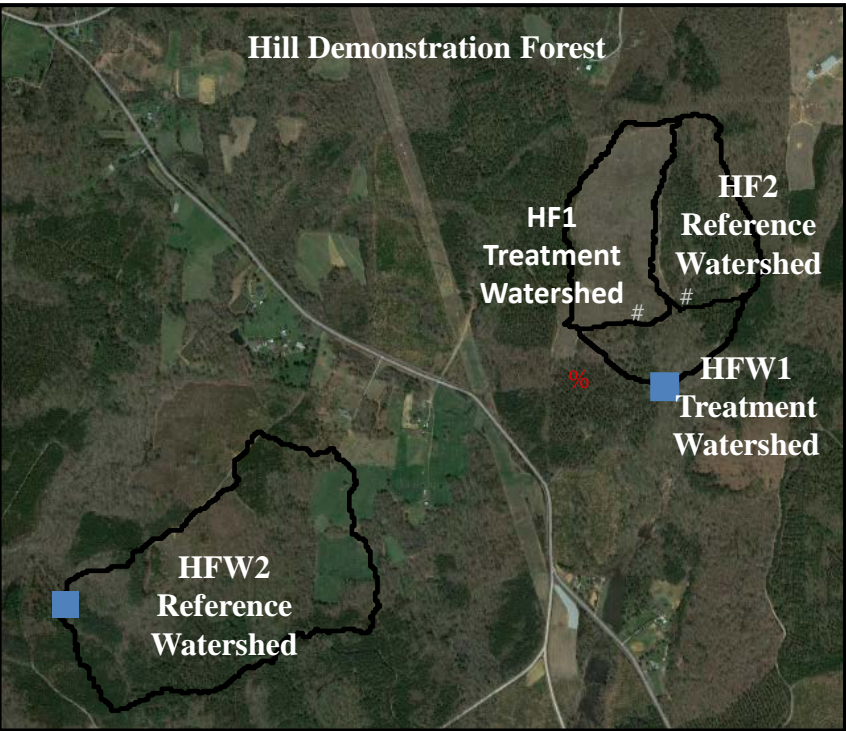
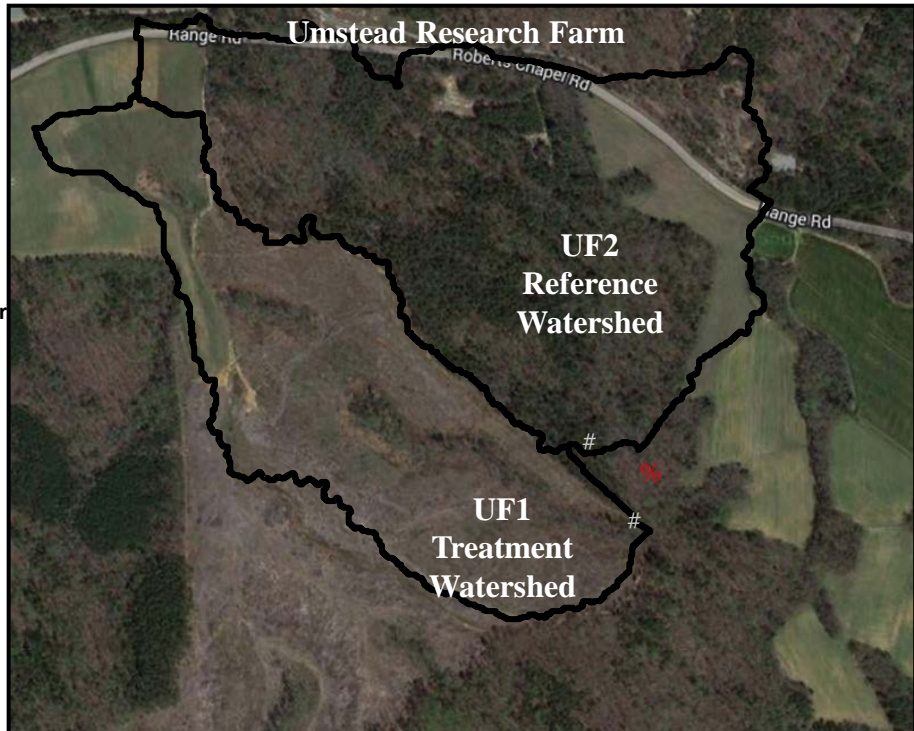


Hill Demonstration Forest



Umstead Research Farm



Flume
 ■ Weir
 % Weather Station

200 meters

200 meters

Aerial view of paired study watersheds and descriptive attributes.

	Hill Demonstration Forest				Umstead Research Farm	
	HF1	HF2	HFW1	HFW2	UF1	UF2
Watershed size (ha)	12	12	29	40	19	29
Stream length (m)	300	260	800	960	550	200
Stand type	Mixed-pine hardwood				Mixed-pine hardwood	
Stand Age (years)	35				70	
Slope (%)	13				7	
Geologic Features	Carolina Slate Belt				Triassic Basin	
Dominate Soil Series	Tatum and Appling				Helena	
Soil characteristics	Non expansive clays, no perched water, deep soils, and discharge water slowly throughout the year due to large amounts of stored water in bedrock and topographic control.				Expansive clays, perched water, thin soils, discharges water slowly in growing season when soils were dry with an in-active confining clay layer, and fast in dormant season when soils were wet with an active confining layer.	